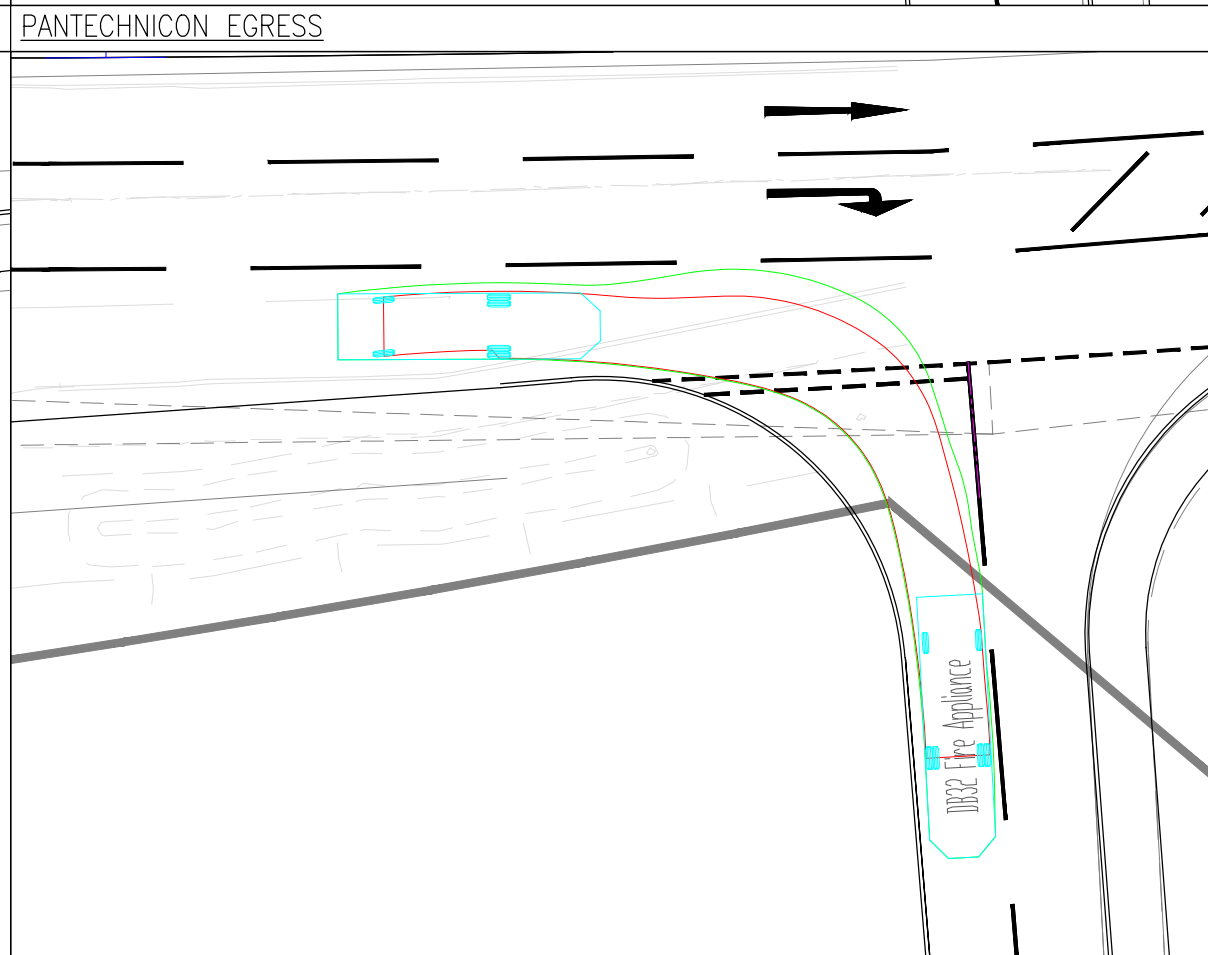


PANTECHNICON ACCESS
PANTECHNICON EGRESS
FIRE TENDER ACCESS
FIRE TENDER EGRESS

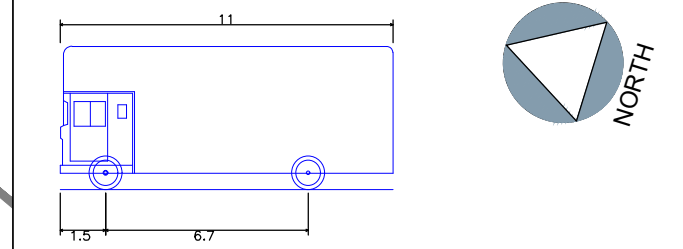


PANTECHNICON ACCESS
PANTECHNICON EGRESS
FIRE TENDER ACCESS
FIRE TENDER EGRESS

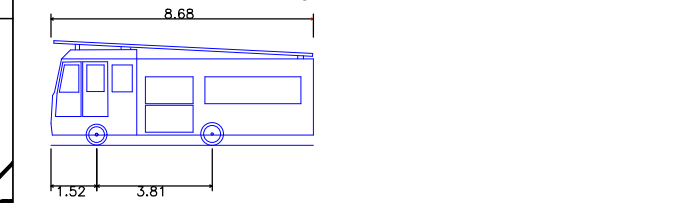
GENERAL NOTES

1. THIS DRAWING IS INTENDED TO BE VIEWED IN COMBINATION WITH ALL RELEVANT ARCHITECTS, ENGINEERS, SERVICES AND SPECIALIST DRAWINGS AND SPECIFICATION.
2. ANY VARIATIONS OR DISCREPANCIES BETWEEN THESE DRAWINGS IN TERMS OF DIMENSIONS OR DETAILS SHOULD BE DRAWN TO THE ATTENTION OF THE ARCHITECT AND/OR THE ENGINEER FOR CLARIFICATION.
3. PAUL BASHAM ASSOCIATES ACCEPTS NO RESPONSIBILITY FOR THE ACCURACY OF BACKGROUND INFORMATION PRODUCED BY THIRD PARTIES – THIS MUST BE TREATED AS INDICATIVE ONLY.
4. ALL DIMENSIONS AND LEVELS ARE IN METRES. DO NOT SCALE THIS DRAWING, PRINT, PLOT OR DISK.
5. THIS DRAWING SHOULD ONLY BE USED FOR CONSTRUCTION IF THE PROJECT PHASE IN THE TITLE FRAME BELOW IS SHOWN AS "CONSTRUCTION". PAUL BASHAM ASSOCIATES TAKE NO RESPONSIBILITY FOR CONSTRUCTION WORKS UNDERTAKEN TO DRAWINGS WHICH ARE NOT MARKED UNDER THIS PHASE.

VEHICLE PROFILES



Pantechicon / Removals Van
 Overall Length 11.000m
 Overall Width 2.500m
 Overall Body Height 4.730m
 Min Body Ground Clearance 0.541m
 Track Width 2.500m
 Lock to lock time 6.00s
 Kerb to Kerb Turning Radius 12.200m



DB32 Fire Appliance
 Overall Length 8.680m
 Overall Width 2.180m
 Overall Body Height 3.452m
 Min Body Ground Clearance 0.337m
 Max Track Width 2.121m
 Lock to lock time 6.00s
 Kerb to Kerb Turning Radius 7.910m



Skoda Octavia
 Overall Length 4.572m
 Overall Width 1.769m
 Overall Body Height 1.488m
 Min Body Ground Clearance 0.249m
 Max Track Width 1.713m
 Lock to lock time 4.00s
 Kerb to Kerb Turning Radius 5.100m

Rev	Description	Date	By	Chkd
E	HCC COMMENTS	26.10.20	JL	MS
D	UPDATED LAYOUT	08.04.20	EK	JL
C	UPDATED LAYOUT	02.04.20	EK	JL
B	UPDATED LAYOUT	10.03.20	CJ	MS
A	REVISED PEDESTRIAN REFUGE ISLAND	21.03.19	MP	JH

Project Name
OAKCROFT LANE
STUBBINGTON

Project Phase
PRELIMINARY

Title
PANTECHNICON AND
FIRE TENDER TRACKING

Paul Basham Associates Ltd
Lancaster Court, 8 Barnes Wallis Road, Fareham, PO15 5TU
01489 668134
info@paulbashamassociates.com www.paulbashamassociates.com

Client

Checked By
JH

Checked Date
07.02.19

Drawn By
HCH

Drawn Date
07.02.19

Scale
1:250

Client Drawing No.
-

PBA Drawing No.
048.0013.004

Revision
E

(AT A3 SIZE)